

# Windows Event Log Action Plugin

## Overview



The Windows Event Log Action Plugin enables dynaTrace to forward incidents into the Microsoft Windows Event Log. The plugin is based on the Windows "eventcreate.exe" command and allows event creation on local and remote machines.

## Plugin Details

<b>Author</b>	Christian Grimm ( <a href="mailto:christian.grimm@dynatrace.com">christian.grimm@dynatrace.com</a> )
<b>dynaTrace Versions</b>	5.5, 5.6
<b>License</b>	<a href="#">dynaTrace BSD</a>
<b>Support</b>	<a href="#">Not Supported</a>
<b>Known Problems</b>	
<b>Release History</b>	2014-03-03 Initial Release 2014-03-04 Backward Compatibility for dynaTrace 5.5
<b>Download</b>	<a href="#">dynaTrace Windows Event Log Action Plugin 1.0.0</a>

## Installation

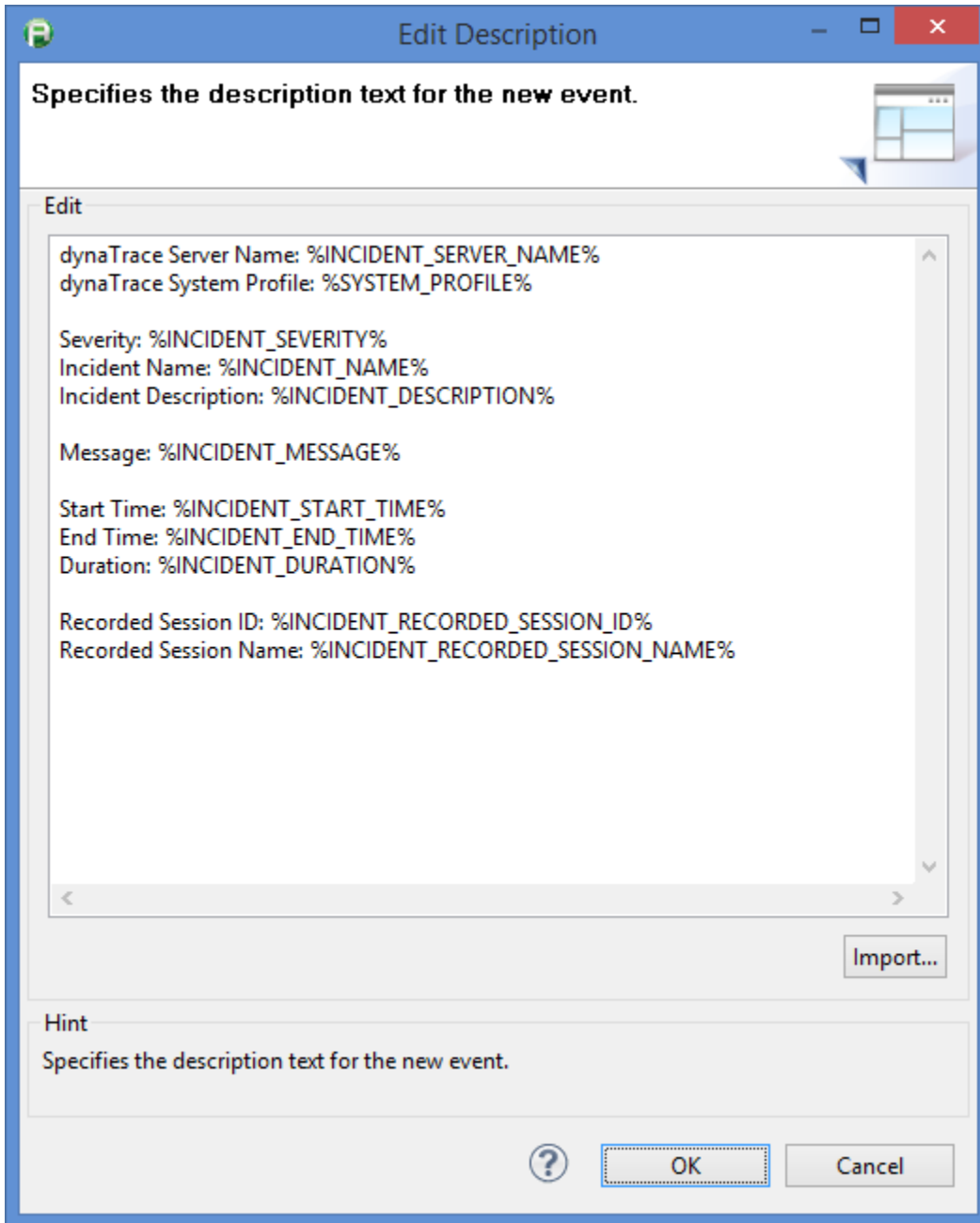
Import the Plugin into the dynaTrace Server. For details how to do this please refer to the [Online Documentation on Plugin Management](#).

## Configuration

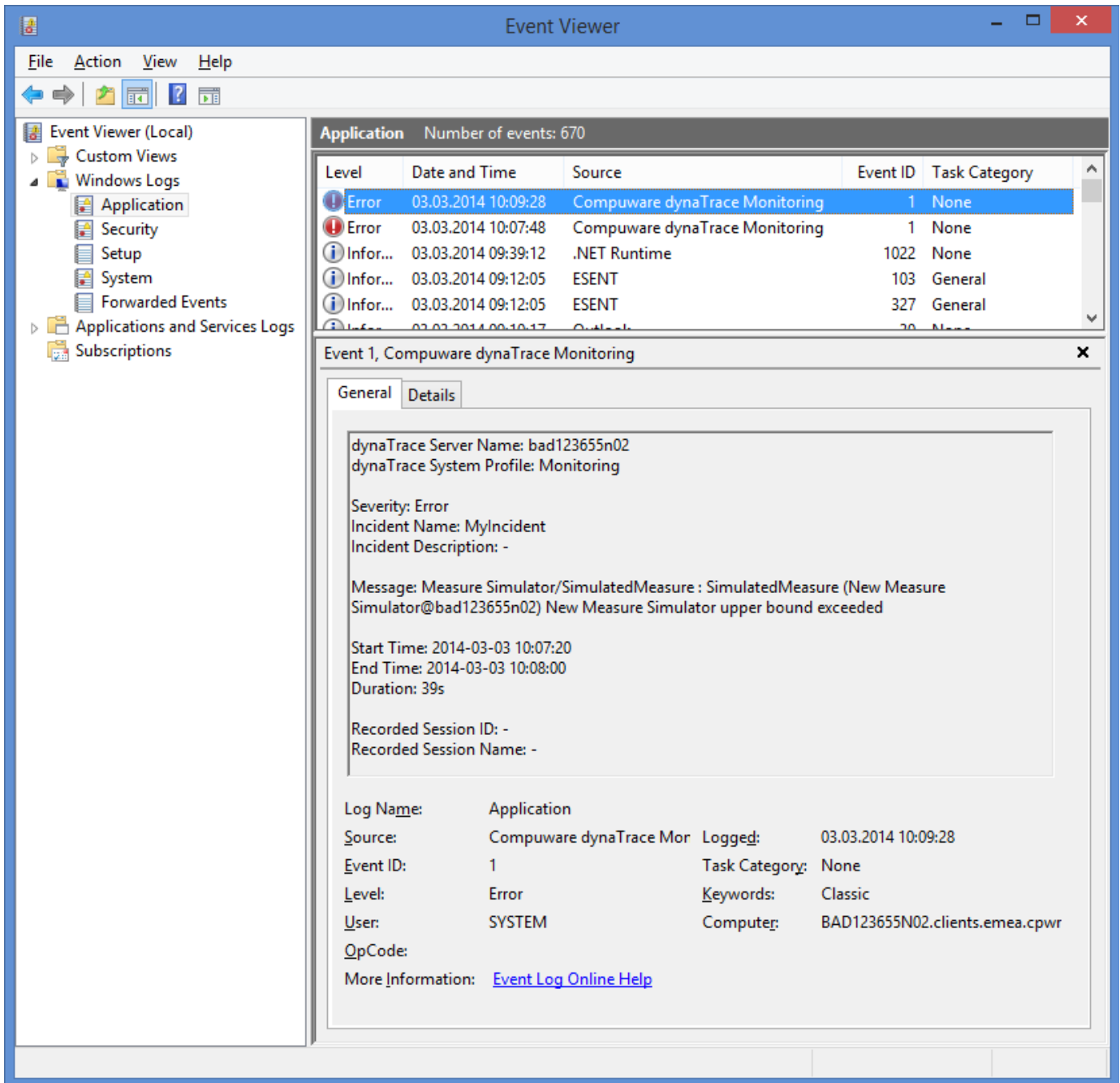
The following screenshot shows an example configuration:



Specifies the description text for the new event. Variables can be used for dynamic text. Example:



## Example Windows Event Log



## Troubleshooting

Please refer to the log file, which contains the full console output of the Windows Event Log Action Plugin:  
 %dynaTraceInstallation%/log/server/com.compuwareapm.community.plugin.WindowsEventLogAction.action.0.0.log

## Feedback

Please provide feedback on this plugin either by commenting on this page or by comments on the [Community Plugins and Extensions](#)