

PostgreSQL Monitor Plugin

Overview



PostgreSQL

PostgreSQL monitor Plugin allows you to monitor the values in key statistics PostgreSQL database. All captured data are provided by dynaTrace as Measures, enabling the assembly of its database monitoring dashboards. You can view statistics tables, database activities, I / O, Indexes, Sequences, and Cache Hit Rate and Usage Index.

| | |
|--------------------------------------|--|
| Name and Version | PostgreSQL Plugin 1.0.0 |
| Supported dynaTrace Versions | >= dynaTrace 6.1 |
| Supported PostgreSQL Versions | This plugin has been tested in PostgreSQL version 9.3. |
| Author | Fernando Lewandowski Albuquerque (fernando.albuquerque@elosoft.com.br). Thanks to Marcelo Colleta (dynaTrace Team - Brazil) |
| License | dynaTrace BSD |
| Support Level | Not Supported |
| Release history | 2014-12-17 1.0.0 Initial Release |
| Download | com.dynatrace.postmon_1.0.0.jar |

Contribution

Feel free to contribute any changes on [Github](#)

Installation

Import the Plugin into the dynaTrace Server via Settings menu -> dynaTrace Server Settings -> Plugins -> Install Plugin. For details how to do this please refer to the [dynaTrace Documentation](#).

To use the provided dashboard please leave the default name of the Monitor as "MyFavoriteDB", then open the Dashboard and set the Data Source accordingly.

Usage

Provided Measures

- Tables Statistics;
- Activities Statistics
- Tables I/O Statistics
- Indexes Statistics
- Indexes I/O Statistics
- Sequences I/O Statistics
- Cache and Hit Rate
- Index Usage
- Index Cache and Hit Rate

Configuration PostgreSQL Monitor

The monitor requires the following configuration settings:

- hostName: Host name of the PostgreSQL Database Instance
- dbName: Database Instance Name
- dbUsername: Username that is used to access the database
- dbPassword: Password that is used to access the database
- dbPort: PostgreSQL Database Port for JDBC Connections (default: 5432)

Screenshots

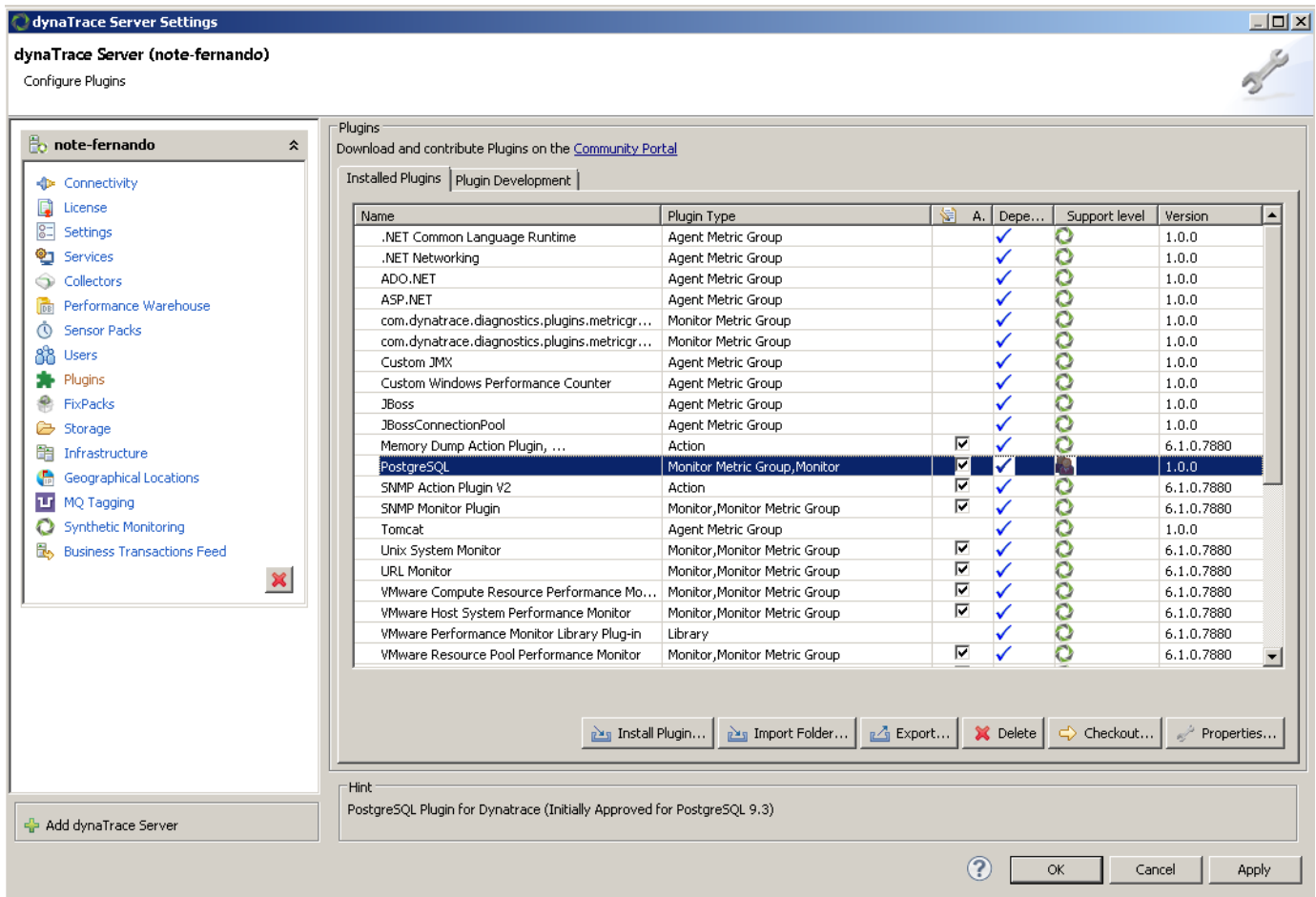


Figure 1 - Installed Plugin

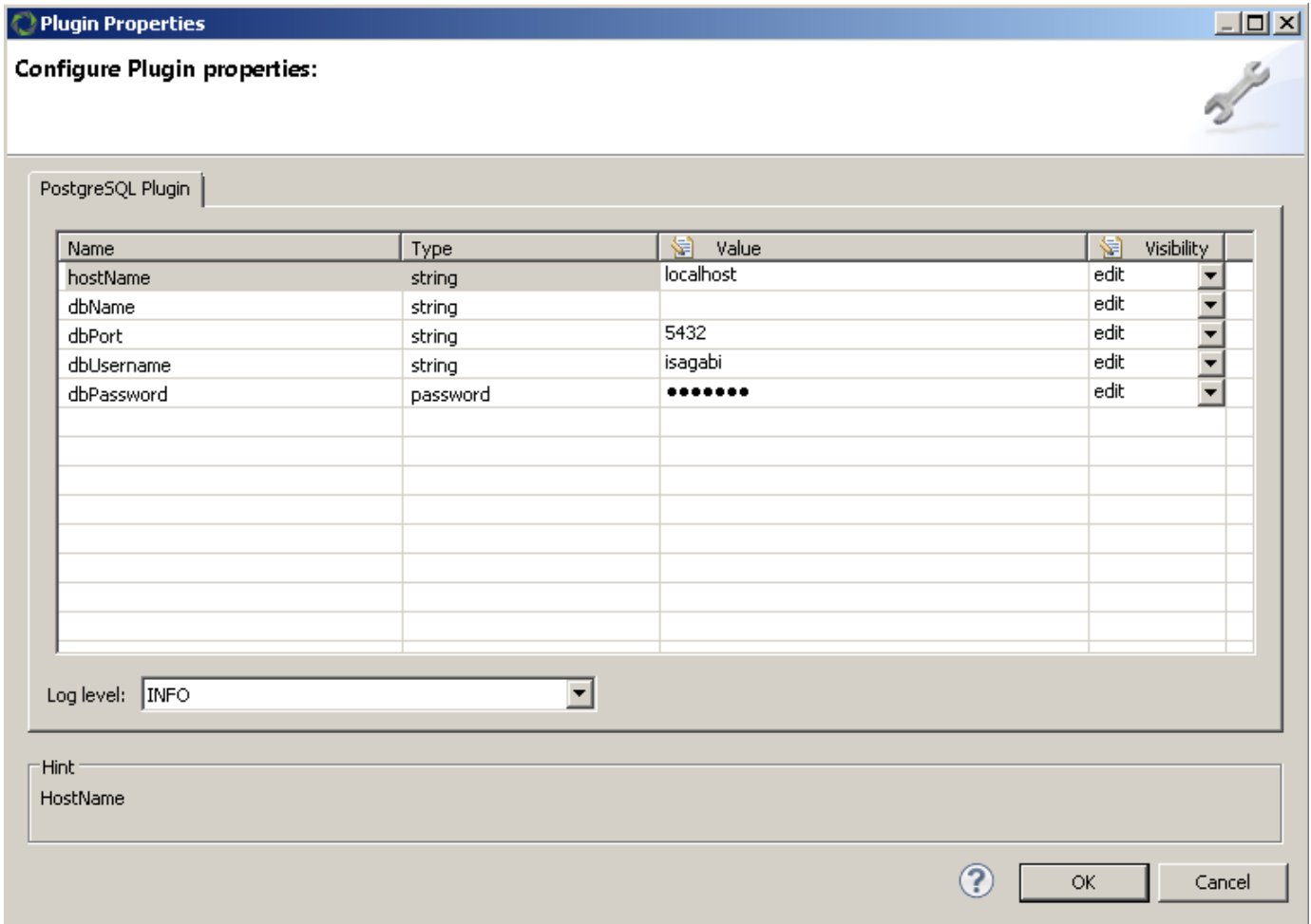


Figure 2 - Plugin Configuration

Edit Plug In Wizard

General configuration

OSGi ID:

Identifier:

Display Name:

Version:

Provider:

Description:

Libraries:

Files:

Dependencies:

Hint
The unique OSGi identifier for this plug in.

Figure 4 - General Setup Plugin

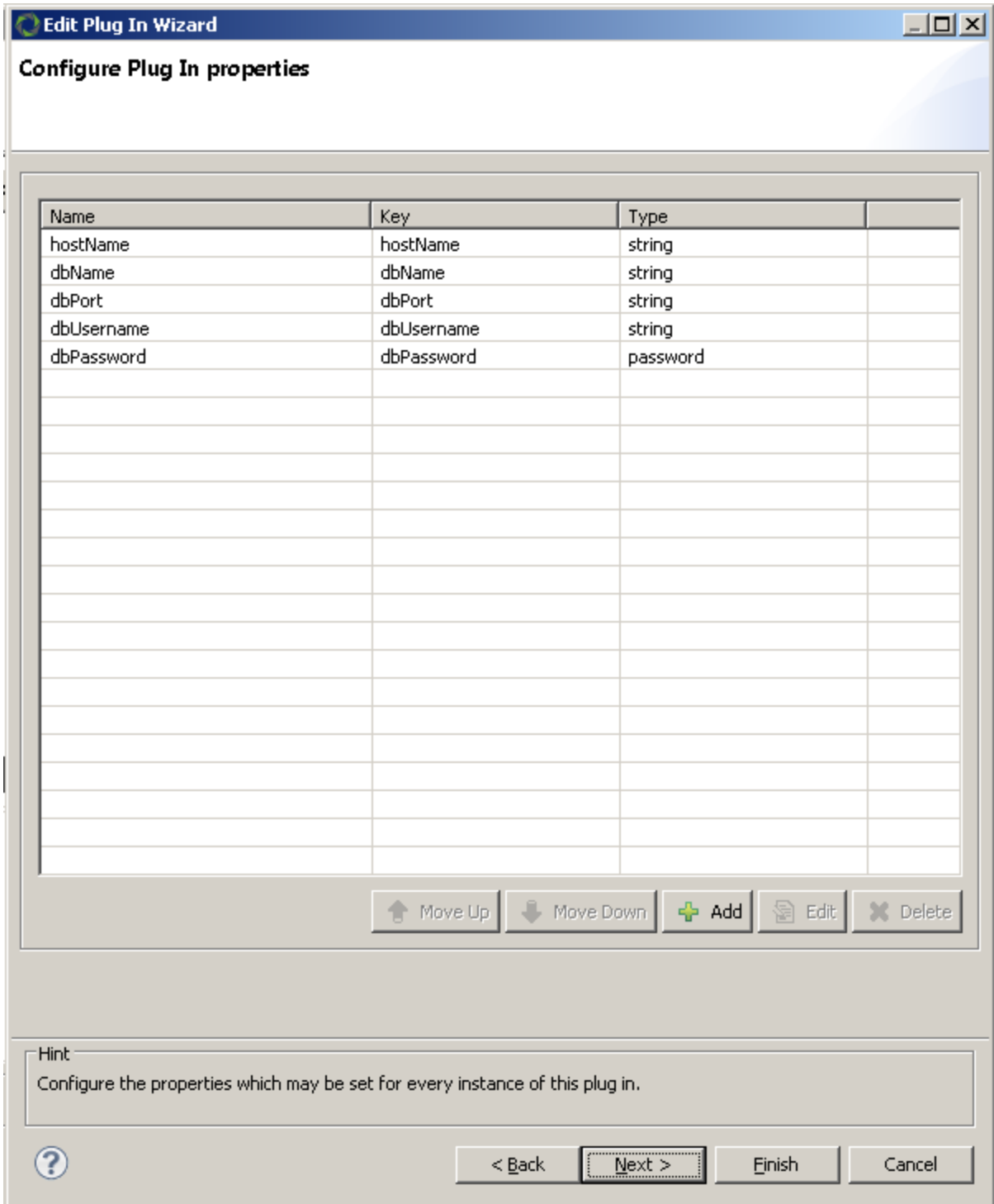


Figure 5 - Configuring Plugin properties

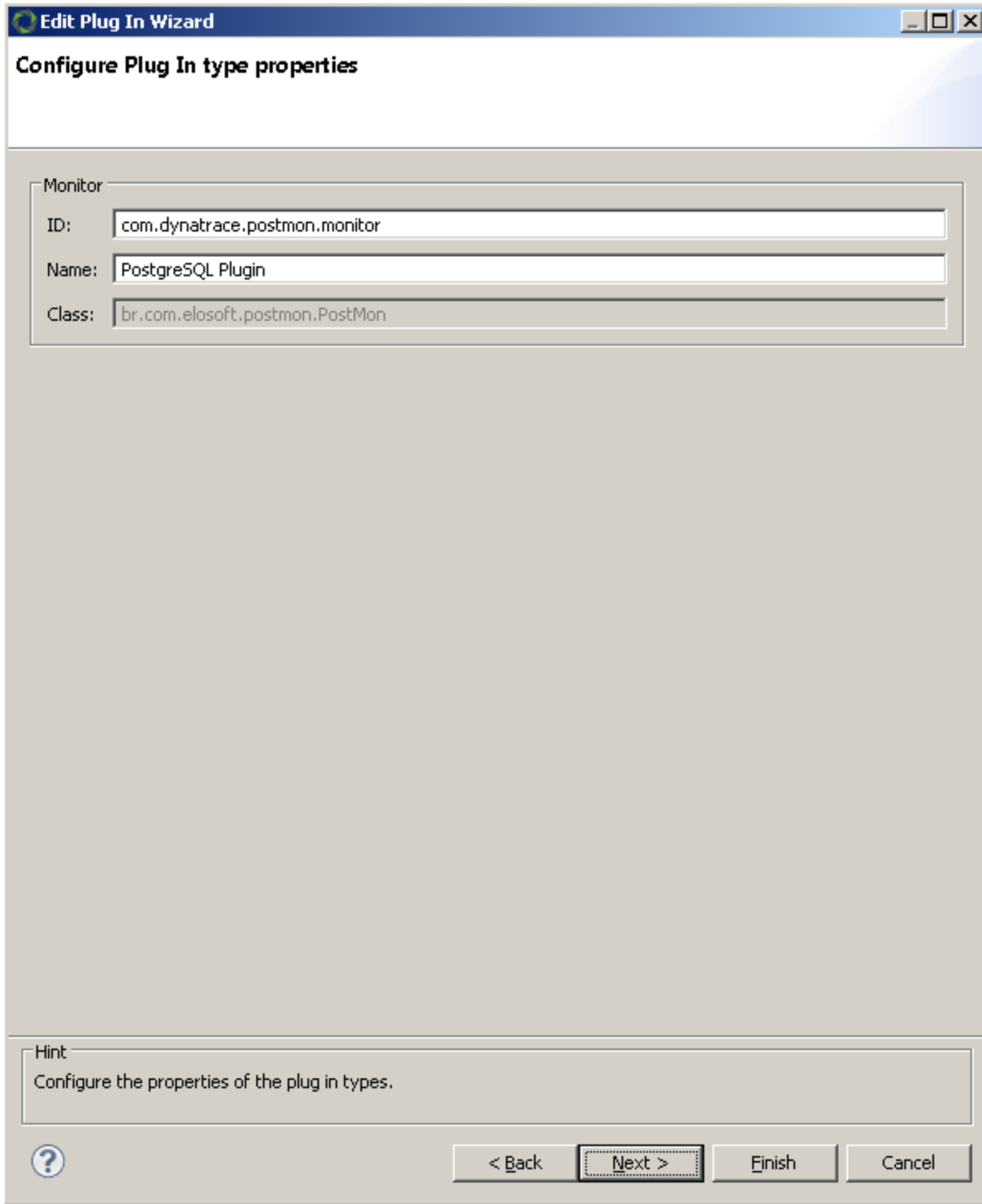


Figure 6 - Configuring Plugin properties

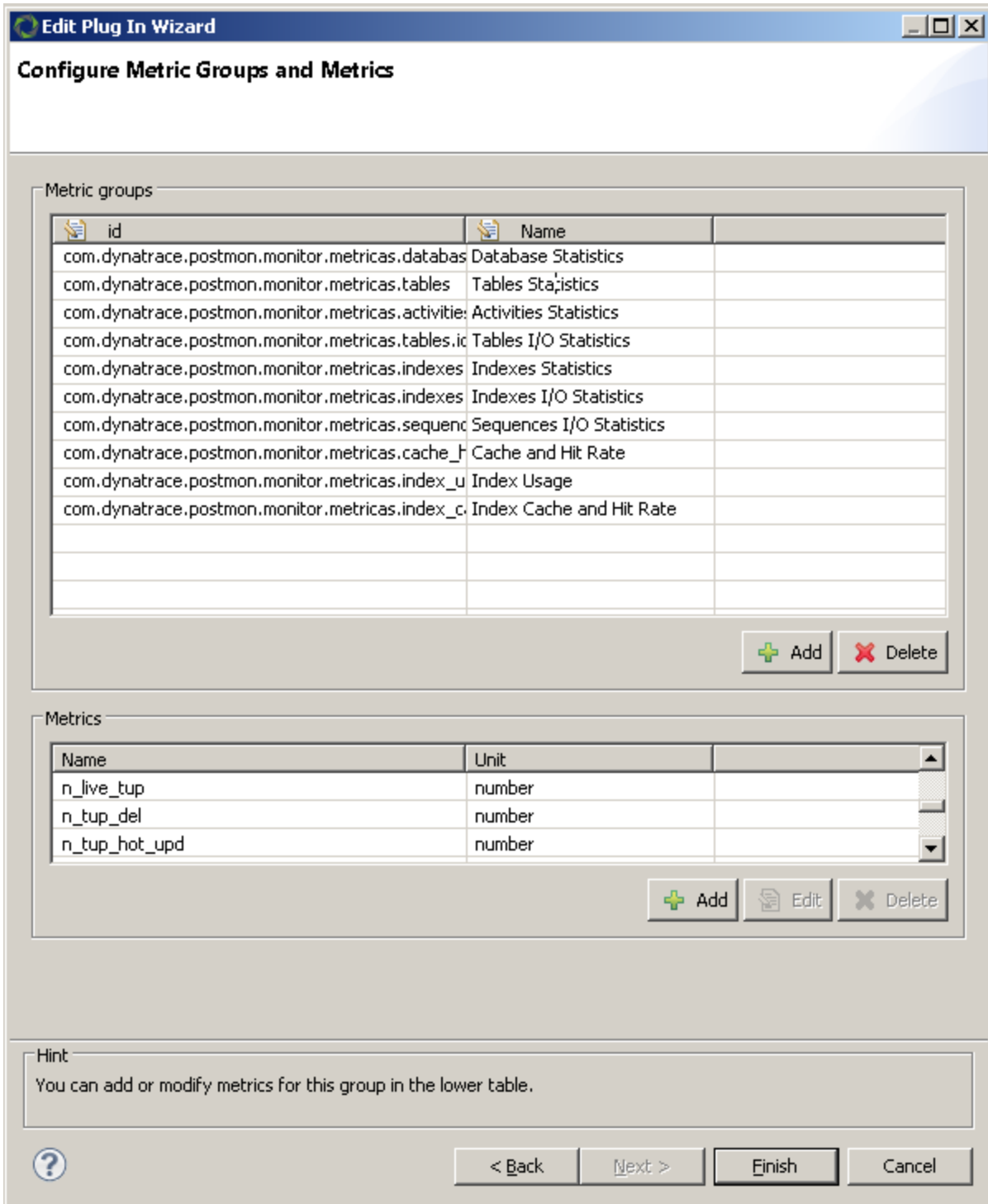


Figure 7 - Configuring Plugin metrics

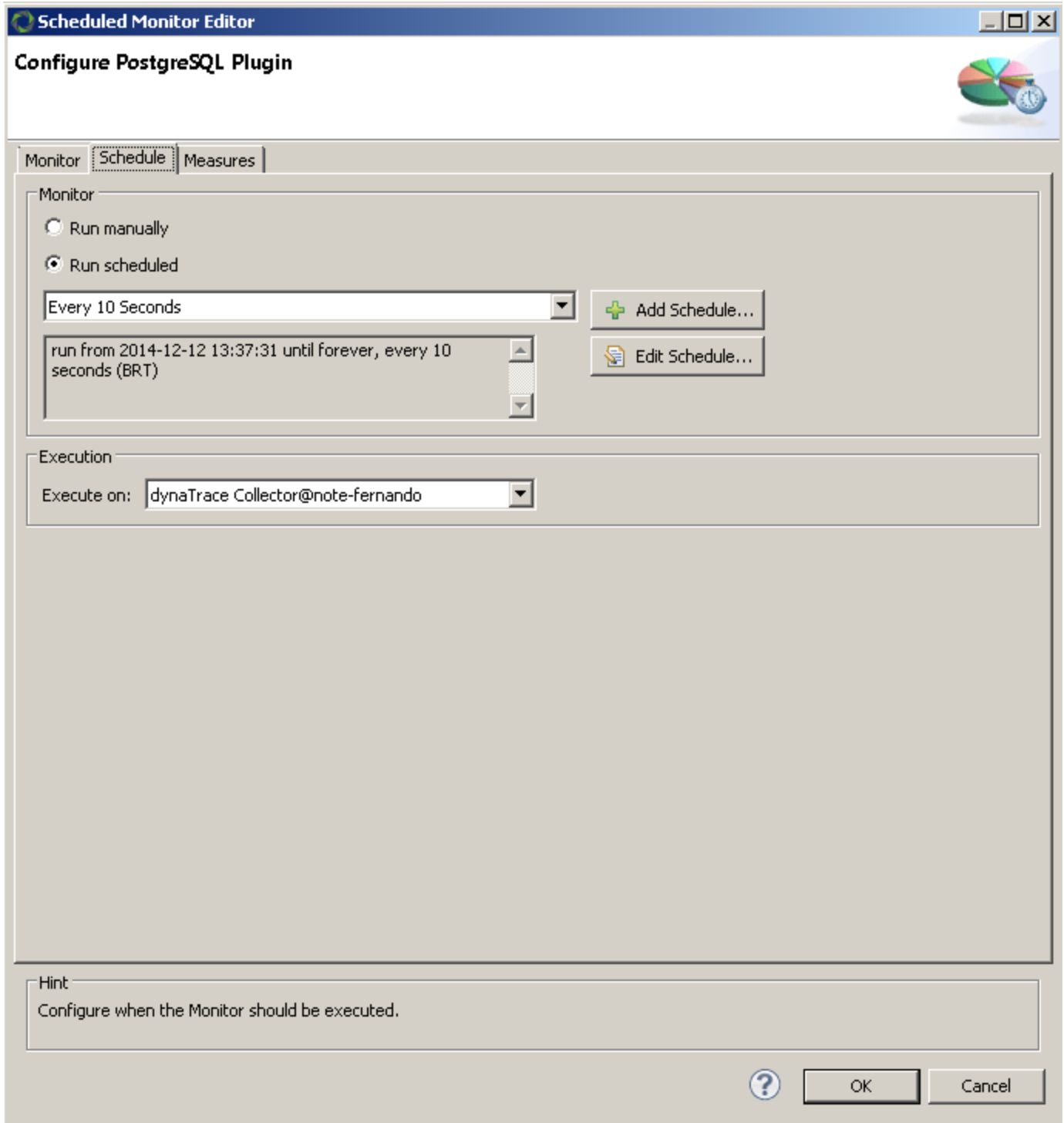


Figure 8 - Monitor Configuration based on the Plugin

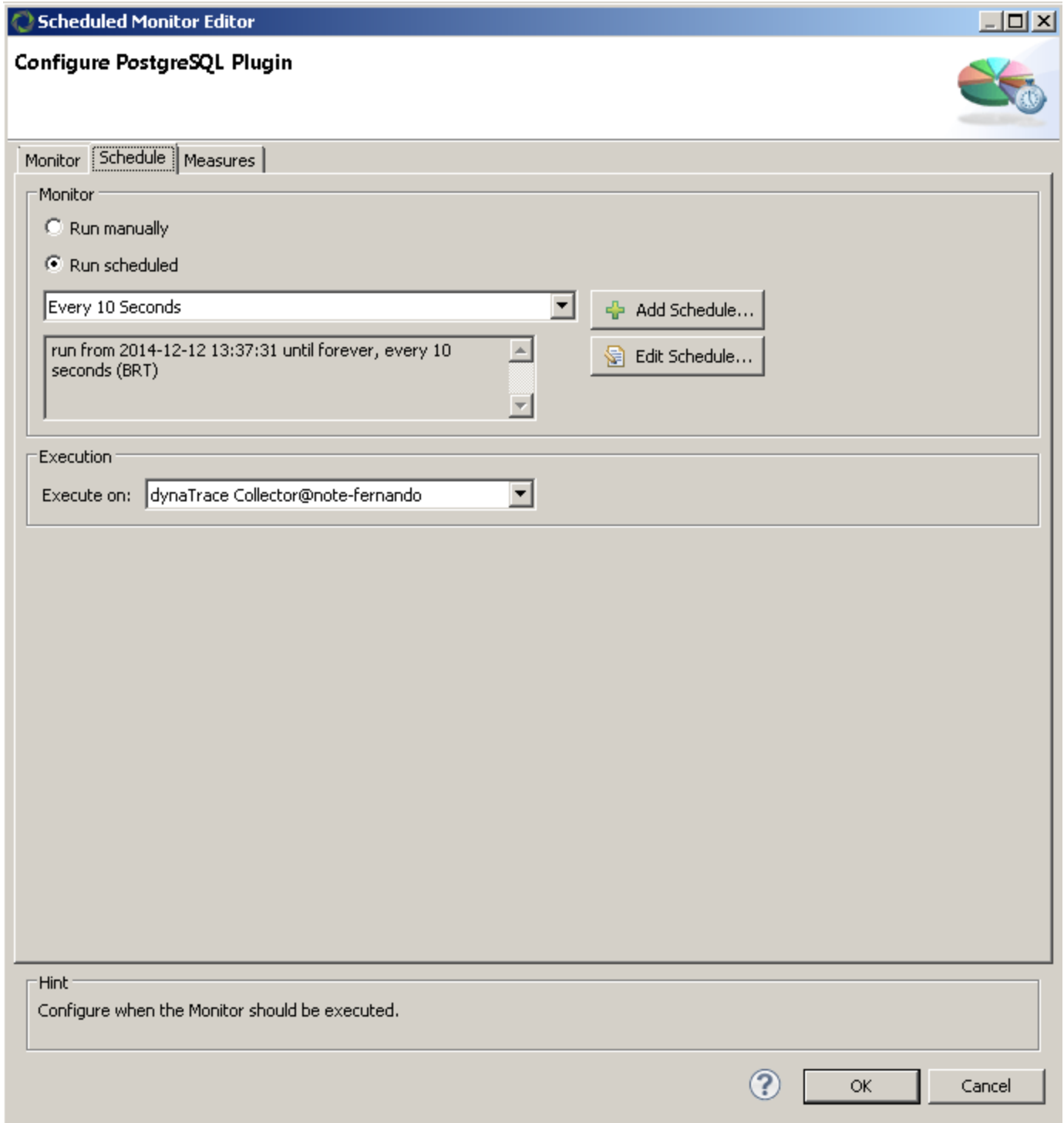


Figure 9 - Monitor Configuration based on the Plugin

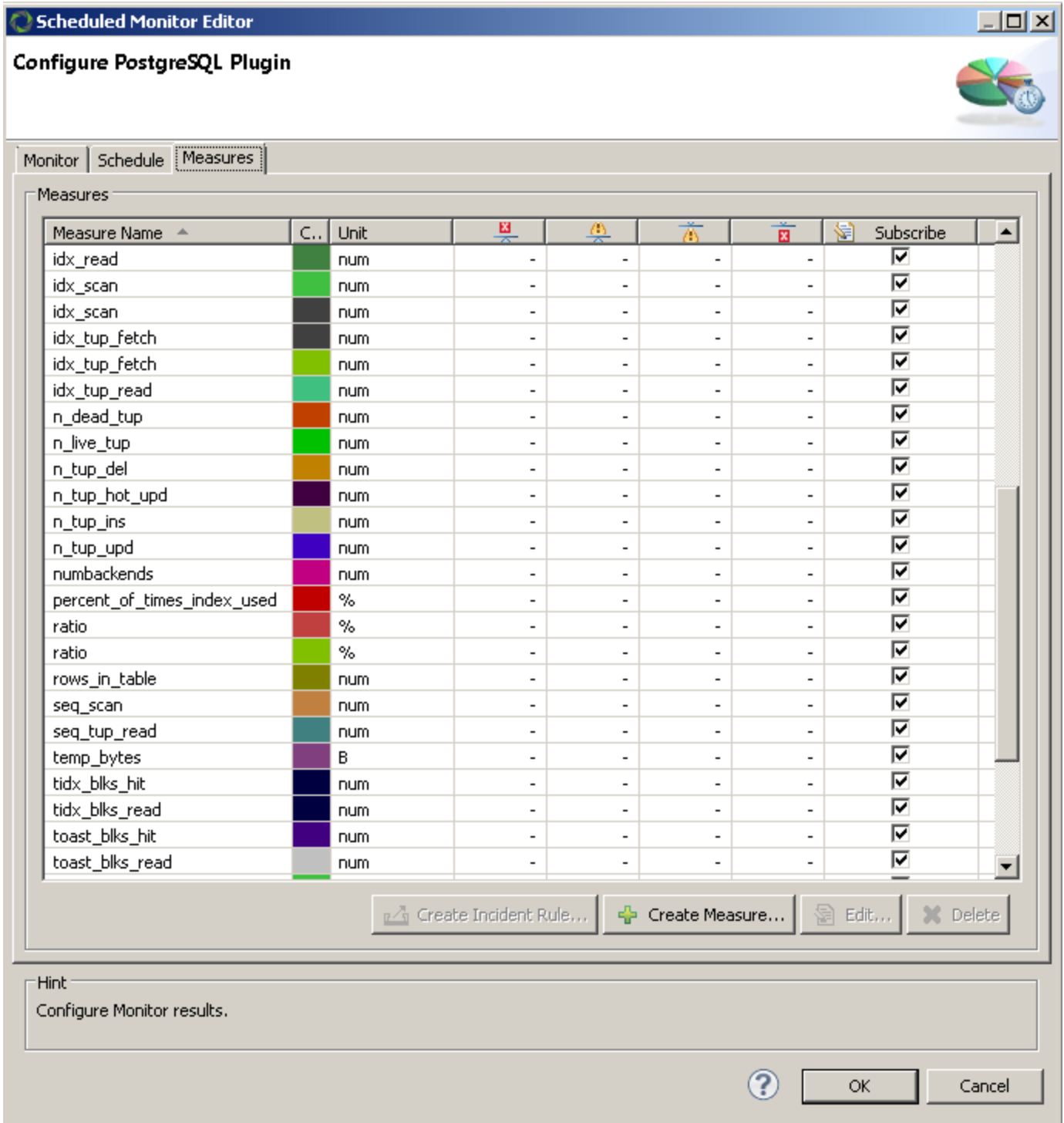


Figure 10 - Monitor Configuration based on the Plugin