

SharePoint FastPack for dynaTrace 3.x

! If you run dynaTrace 4 please have a look at the main [SharePoint FastPack](#)

Overview



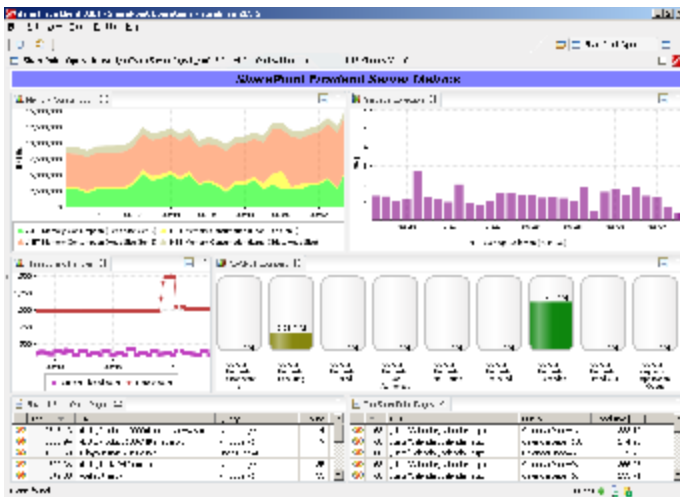
The dynaTrace FastPack for the Microsoft SharePoint (both Windows SharePoint Services and Microsoft Office Share Server) enables faster analysis of SharePoint Applications by providing specific Sensor Packs and Dashboards to identify problems in custom WebParts, SharePoint Lists & Views, usage of CAML, ...

i **Starting with dynaTrace 3.1.1**
Starting with Dynatrace 3.1.1 the *ASP.NET Extended* pack (which is part of the SharePoint Download package) is included in the default installation of Dynatrace. The Sensor Pack that is installed on the Dynatrace Server is called *ASP.NET Events*

FastPack Details

Name	Microsoft SharePoint FastPack
Version	3.0
dynaTrace Version	3.x
Author	dynaTrace software
License	dynaTrace BSD
Support	Community Supported
FastPack Contents	SharePoint FastPack for dynaTrace 3.x SharePoint Sample Session

SharePoint Operations Dashboard



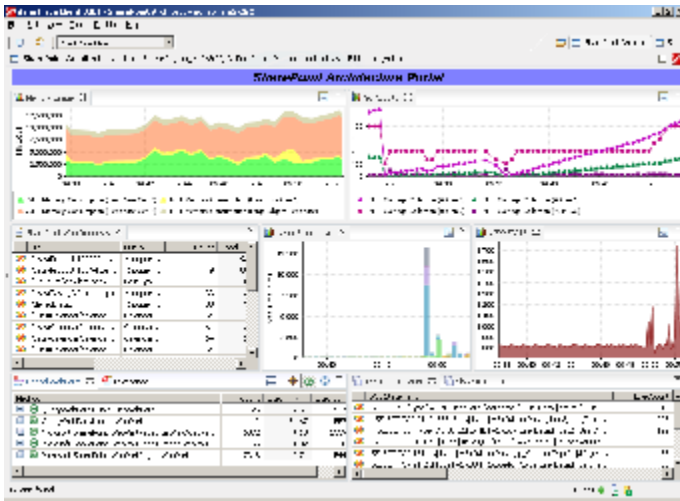
The Operations Dashboard visualizes Windows Performance Counters of the SharePoint Frontend Server. The dashboard shows live and historical data about

- Memory usage
- Garbage Collection

- ASP.NET Web Request

It also gives a usage overview of SharePoint Pages and Lists to identify the top most used and slowest resources in your SharePoint Installation.

SharePoint Architect Dashboard

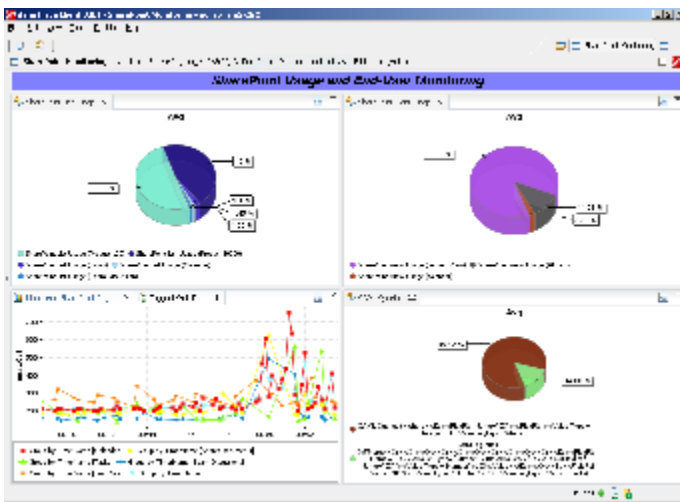


The Architect Dashboard helps the SharePoint Administrator and Software Architect to identify problems in the areas of

- Memory usage
- WebPart Usage
- SharePoint Content Database Access (SQL Access)
- Exceptions

This dashboard visualizes which WebParts contribute the most to the overall performance, which data is retrieved from the Content Database or external database and highlights exceptions that may or may not be handled by your custom or 3rd party code.

SharePoint Monitoring Dashboard

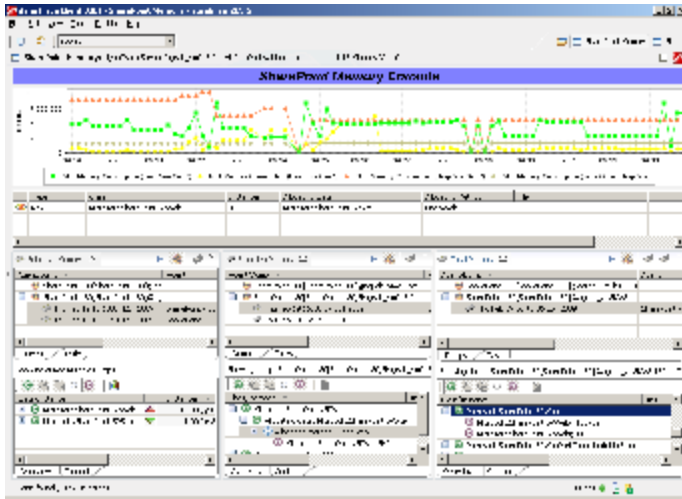


The Monitoring Dashboard gives insight into end user response times and usage of

- SharePoint Lists
- SharePoint Views
- CAML Queries

This dashboard visualizes the End-User Response times of a Web Transaction Monitor (WTM) that comes with the FastPack. This WTM monitors the standard SharePoint pages such as Documents, Calendar and Users.

SharePoint Memory Dashboard



The Memory Dashboard provides the entry point for SharePoint specific Memory Analysis. The FastPack is configured to selectively monitor the critical SharePoint classes SPsite and SPWeb. Use this dashboard to identify Memory Leaks caused by references to these objects that were not disposed.

Package Information

Check out the [Video Tutorial for SharePoint](#). It explains how to install and use the Package. It also highlights use cases about how to analyze certain problems within SharePoint

On the [Dynatrace Blog](#) the following posts give a good overview of the FastPack and give additional hints about problematic areas in SharePoint applications:

- [dynaTrace SharePoint Fast Pack](#)
- [5 Top Performance Problems in SharePoint](#)

The Download Package includes everything you need to manage SharePoint Applications:

- Pre-Configured System Profile **SharePoint**
- 4 Dashboards for Operations, Architects, Usage Monitoring and Memory Analysis
- Knowledge Sensor Packs for SharePoint and ASP.NET
- [Sample dynaTrace Sessions](#)

Installation

1. Save the attached file locally to the computer where the Dynatrace Client is installed.
2. Unzip the file.
3. Copy the Dashboards into your Dynatrace Server conf\dashboards installation directory
4. Import the Sensor Packs to your Dynatrace Server
5. Import the System Profile