

# Tivoli Alerting Plugin (dynaTrace 3.x)

## Overview



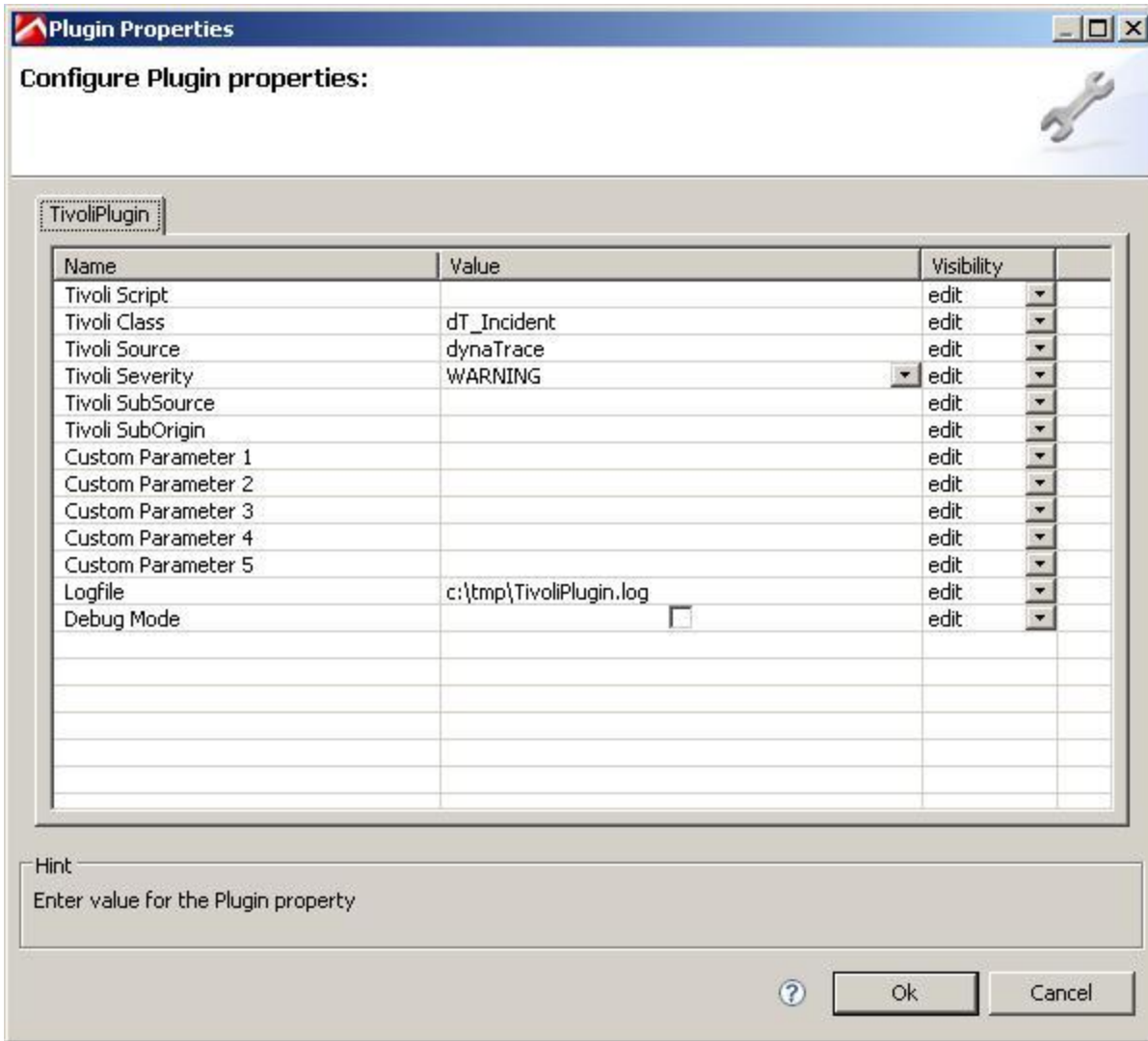
The **Tivoli Alerting Plugin** enables the ability to push dynaTrace Incident Notifications into Tivoli. In general, the Tivoli Plugin only executes the denoted Tivoli Executeable with all the denoted settings as parameter. So it is very important, you have a running Tivoli Endpoint installed on the same machine the Plugin is running.

## Plugin Details

<b>Plug-In Versions</b>	
<b>Author</b>	Dan Germain (dan.germain@dynatrace.com)
<b>License</b>	<a href="#">dynaTrace BSD</a>
<b>Support</b>	<a href="#">Not Supported</a>
<b>Known Problems</b>	
<b>Download</b>	<a href="#">com.dynatrace.diagnostics.actions.TivoliPlugin_3.1.0.jar</a>
<b>Release History</b>	2010-05-31 Initial Release

## Configuration of Tivoli Alerting Plugin

The Tivoli Alerting Plugin is configured through the Plugin properties:



Property	Description
<b>Tivoli Script</b>	Full Path to the Tivoli executable or the Tivoli Script
<b>Tivoli Class</b>	Select which Tivoli class gets used for all passed incidents from dynatrace
<b>Tivoli Source</b>	Select which name is used for the source system
<b>Tivoli Severity</b>	Select which severity in Tivoli each incident has
<b>Tivoli SubSource</b>	Tivoli SubSource
<b>Tivoli SubOrigin</b>	Tivoli SubOrigin
<b>Custom Parameter 1..5</b>	You can define Custom Parameters as key/value pairs (e.g. key=value)
<b>Logfile</b>	Full path for a logfile written by the plugin
<b>Debug Mode</b>	Specifies whether the logfile gets written or not

All parameters get passed to the Tivoli server, the Message for the Tivoli Incident is concatenated from dynaTrace Incident Rule and the dynaTrace Incident Message.

In addition the customer will need to add a new dynaTrace class definition to Tivoli. The dynaTrace class definition extends the standard Tivoli EVENT definition.

## Installation

Import the Plugin into the Dynatrace Server. For details on how to do this please refer to the [dynaTrace documentation](#).