

.NET LINQ Sensor Pack

Overview

Name	.NET LINQ Sensor Pack
Description	Provides standard rules for Developers to analyze the internals of LINQ Query Execution
Version	1.0
dynaTrace Diagnostics Version	2.6
Author	dynaTrace
License	dynaTrace BSD
Support	Community
Download	dynaTrace_LINQKSP_v1.0.zip

Sensor Pack Information

LINQ (=Language Integrated Query) has recently been introduced by Microsoft. It is a powerful library extension to the .NET Framework and it ties a SQL-like query syntax into the language. Additionally, it servers as a layer ontop of a broad set of data sources and providers. It is, for instance, possible to query objects in memory (main use case for LINQ) as well as data stored in XML (LinqToXML) or data stored in SQL-Server (LinqToSQL).

Please have a look at the these links for a detailed description about LINQ:

- [The LINQ Project](#)
- [101 LINQ Samples](#)

Using LINQ is straightforward and it helps developers to approach typical query tasks intuitively. However, simplicity comes at a cost: the "old" approach can be faster in terms of runtime performance.

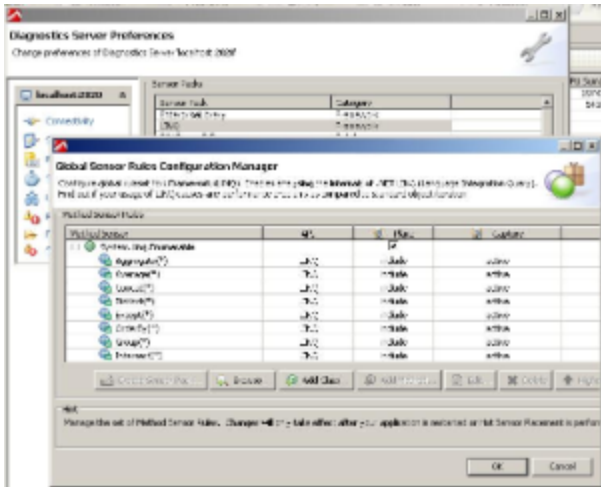
This Knowledge Sensor Pack is targeted at developers who are interested in the internals of LINQ. You can also find a new [.NET LINQ Scenario Sample](#) that implements different use case scenarios with and without LINQ. The sample also shows - with the help of this KSP - which methods are called internally in order to execute LINQ statements.

Installation

1. Open the dynaTrace Diagnostics Server Preference Dialog in the dynaTrace Diagnostics Client
2. Switch to the Sensor Pack Tab
3. Click Import and select the .dtacs file which is attached to this page
4. Place the imported Knowledge Sensor Pack in your System Profile

Screenshots

Knowledge Sensor Pack Overview



Sample PurePath

