

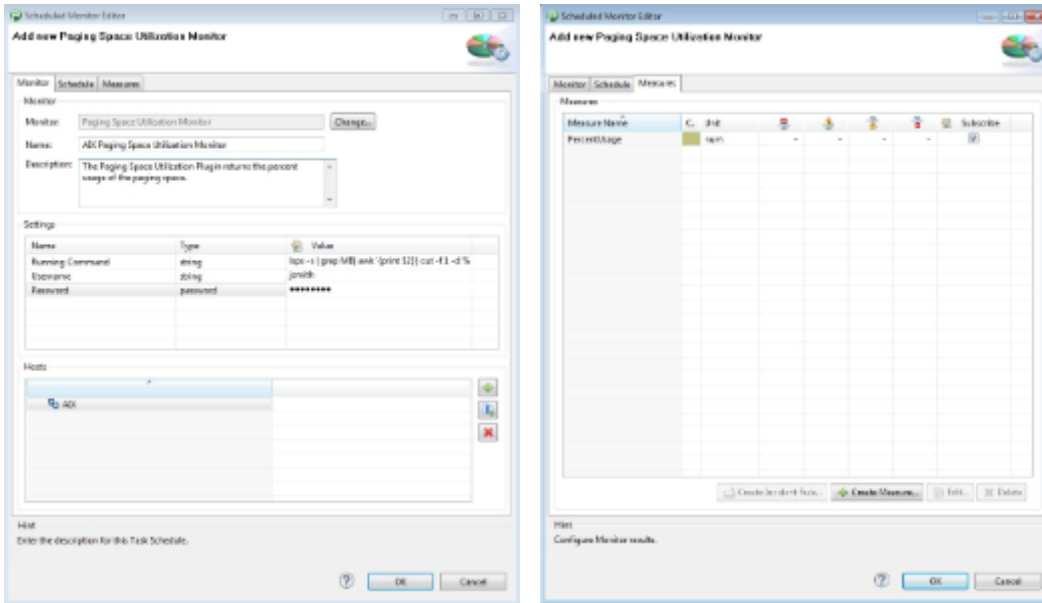
Paging Space Utilization Monitor Plugin

Overview

The monitor returns the percent usage of the paging space via the command below on AIX servers. The command is specific to AIX. The user credentials entered when configuring the monitor must have ssh access to the remote server you wish to monitor.

This monitor is hard coded to run

```
"lsps -s | grep MB| awk '{print $2}' | cut -f 1 -d %"
```



Plugin Details

Plug-In Versions	Paging Space Utilization Monitor Plugin 1.0.1 (compatible with dynaTrace >= 5.5)
Author	Derek Abing
License	dynaTrace BSD
Support	Not Supported If you have any questions or suggestions for these plugins, please add a comment to this page, use our forum , or drop us an email at community@dynatrace.com !
Known Problems	
Release History	2013-03-12 Initial Release

Provided Measures

PercentUsage: Returns count of running processes

Configuration

Name	Value
Running Command	This monitor is hard coded to run "lsps -s grep MB awk '{print \$2}' cut -f 1 -d %"
Username	The username that is used for authorization with the host
Password	The password for the username

Installation

Import the Plugin into the dynaTrace Server. For details how to do this please refer to the [dynaTrace documentation](#).

Contribution

Feel free to contribute any changes on [Github](#)